

NEW JERSEY

Historically Speaking Patch Program

ABOUT THIS 'HISTORICALLY SPEAKING' KIT

TABLE OF CONTENTS

Detailed outline of kit	3
State Journal cover	4
Activity sheets	4-7
Recipes	8
Native Trees	9
Native American/ Colonial Information	10-11
Nine Men's Morris	12
Thomas Edison Book	13-14
Hit a Home Run! Game	15-19
Order Form and Shipping Chart	20-21

This **kit** was created to assist you or your group in completing the 'New Jersey Patch Program.'

Kits are books written to specifically meet requirement of our state's patch program and help individuals earn the associated patch.

All of the information has been researched for you already and collected into one place.

Not all of the requirements of the patch program are covered in this kit. Selected requirements are included and you choose the ones you wish to complete according to the items given. Included are; state symbols, maps, crafts, games, recipes, coloring sheets, and more educational information. These materials can be reproduced and distributed to the individuals completing the program.

Any other use of these programs and the materials contained in them is in direct violation of copyright laws.

If you have any questions, please feel free to contact Patchwork Designs, Inc. using any of the methods listed below.



ORDERING AND CONTACT INFORMATION

Written By:

Cheryle Oandasan

Copyright 2001

After completing the 'New Jersey Patch Program', you may order the patch through Patchwork Designs, Incorporated. You may place your order in one of the following ways:

Mail

Checks and Money Order: Please send checks and money orders, payable to Patchwork Designs, Inc. to:

Patchwork Designs, Inc.
8421 Churchside Dr
Gainesville, VA 20155

Credit Card

Telephone your MasterCard, Discover, or Visa order to (703)743-9948. Leave your order and credit card number on our secure line.

Fax

Using these same card types, you may also fax your order to (703) 743-9942.

Online Store

www.patchworkdesigns.net
All information is secure.

HISTORICALLY SPEAKING NEW JERSEY PATCH PROGRAM

complete 3 requirements to earn this patch

1. New Jersey was one of the thirteen original colonies. What number was it? Who was the state named after? What is its nickname? Locate New Jersey on a map of the USA. Identify the capital. Identify the State Bird, flower and flag.
2. The Leni-Lenape Native American Indians were one of the first tribes in New Jersey. Research how and where they lived. What skills did they need to survive? What did they eat? What is a dugout canoe and what was it used for? If you can, visit a festival or historical site, such as the Red Hawk Dancers. Choose one of the following: Prepare and complete a skit, conduct a play, make paper dolls dressed in native clothing, or make a pictograph using symbols for words.
3. Learn about several famous people who lived in New Jersey. Why were they important? What did they accomplish? Some examples are: Mary Hays, Molly Pitcher, James Still, John Cabot, Thomas Edison, Albert Einstein and Henry Hudson.
4. Enjoy one of New Jersey's many outdoor activities Swim or stroll on the beautiful beaches, hike in the Mountains, kayak on the soothing lakes, ride on a paddlewheel river boat, camp in a log cabin or explore on your own.
5. From Victorian villages to lively cities, New Jersey has sites for you to see. Visit or research a historical site or area in New Jersey. Such as: Cold Spring Village, Potter's Tavern, or the A.J. Meerwald ship.
6. Every year, many festivals are celebrated in New Jersey. Such as: Victorian Week, Kite and Harvest Celebrations, Mid Summer Nights Festival, or Sinterklaasfeest. Find out more about a festival in New Jersey. Where it is celebrated, when and why? If you can, visit a festival. For fun, you can have a pretend festival of your own re-creating New Jersey festivals.
7. The New Jersey Performing Arts Center was one of the nation's first major performing arts centers to open in the northeast. There are many spectacular theaters in New Jersey. Enjoy a play, opera, or visit a theater in your area.
8. Learn more about New Jersey during the colonial era. Where were the first settlers from? What foods did they eat? How were the foods prepared? What type of clothing did they wear? What daily chores did the children have? What types of jobs were available? Choose one of the following: Visit a colonial festival or reenactment, make paper dolls dressed in colonial clothing, conduct a skit or play about the colonial era, make a whirly gig or play a colonial game, or draw a colonial picture.
9. Ellis Island was the first place immigrants, seeing a new life in America, landed. It is now a national park. What other sites are there to see on this island? What other state is it near? Visit Ellis Island or another National Park in your area. Explore the history and nature of the park.
10. Cape May has one of the oldest operating lighthouses in America. Choose a lighthouse to learn more about. When was it constructed? What materials is it made from? What color is it? Do they still use it today? How tall is it?
11. New Jersey has many wonderful foods. Try one of their multi-cultural cuisines such as: clam chowder, wiener-schnitzel, potato skins, corn beef and cabbage, fried tomatoes, peach pie or blueberry cookie pie.
12. There are more than 3,000 wildflowers in New Jersey and over 25 are rare orchids. Explore more of their wildlife. Look for these objects in a park or field. Find 4 different flowers, 3 mammals, 2 insects, and 4 trees.
13. Learn a traditional craft from New Jersey. For example: Crocheting, embroidery, weaving, pottery, basket making, wood work, or quilting.
14. On June 19, 1846, in Hoboken, New Jersey, the first professional baseball game was played. What were the teams named? Who invented the game? How did they catch the ball? For fun, play a game of baseball. http://www.mrbaseball.com/history/history_main.htm

NEW JERSEY

DETAILED OUTLINE OF KIT

The items that are located in this kit can be copied for the participants and stapled together in a book format. There are also informational sheets and descriptions for additional crafts. Choose items to complete according to age level. Older participants can assist younger participants.

Page 4- Front cover of New Jersey journal.

Page-5- Map of the United States and the New Jersey flag. **Requirement #1**

Page 6– State outline and symbols. Coloring instructions are provided. **Requirement #1**

Page 7 -Draw a lighthouse. There are three lighthouses described on this page. They can either draw one of the lighthouses mentioned or their favorite. **Requirement #10**

Page 8 - Recipes representing New Jersey's produce. Create something to share with all the participants. Optional: Enclose the recipes in the journal for future use. **Requirement #11**

Page 9- Native trees in New Jersey. Have the participants color the items as instructed. **Requirement#12**

Page 10- Native American paperdolls. **Requirement #2**

Page 11 and 12 - Colonial paper doll or Nine Men's Morris game. **Requirement #8**

Page 13 and 14– Thomas Edison mini book to read and color (cut on line indicated by the arrow) **Requirement #3**

Page 15 to 19– Hit a Homerun ! Game **Requirement #14**

Page 20– Requirements for the New Jersey patch program.

Other items to complete that shouldn't be stapled in the journal.

—Thomas Edison mini book to read and color (cut on line indicated by the arrow) **Requirement #3**

—Game "Hit a Homerun!" **Requirement #14**

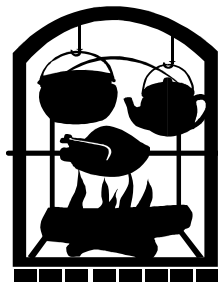
—Game "Nine Men's Morris" **Requirement #8**

Included in the kit are items to complete the following requirements #1, #2, #3, #8, #10, #11, #12 and #14. Choose items for the participants to complete according to their age level or interests.

<http://www.crwflags.com/>

[Www..exploringnature.org](http://www.exploringnature.org)

<http://www.theus50.com/>





Name: _____

MY NEW JERSEY JOURNAL

Locate New Jersey on the map. Color it blue. Color the remainder of the map a variety of colors.



Color the New Jersey Flag



Colors needed:

- Yellow**
- Orange**
- Red**
- Gray**
- Blue**

Liberty means freedom, Prosperity means wealth. New Jersey fought for it's freedom and worked for it's wealth. The background is a **golden yellow**. The lady on the **left** has an **orange** dress. The lady on the **right** has a **red** dress. The horse is **gray**. The designs around the horse are **blue**. The helmet under the horse is **yellow**. The shield is **blue with yellow** marks. The ribbon is **blue**.

State Outline and Symbols

"The Garden State"

Named for it's gardening or farming industry that was such a great feature of the State's economy.

New Jersey was named for Sir George Carteret, for his achievements defending the Isle of Jersey during the English Civil War.

KEY FOR MAP

★ = Capital

Color the New Jersey state **green**.
Color the star **red**.



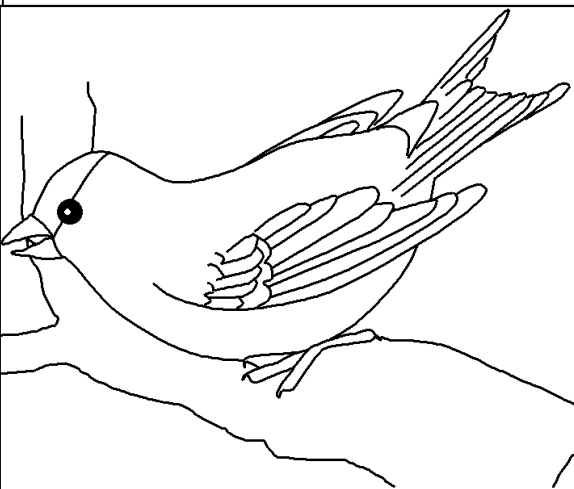
State Flower: Purple Violet

Color the flower purple. The leaves are green.



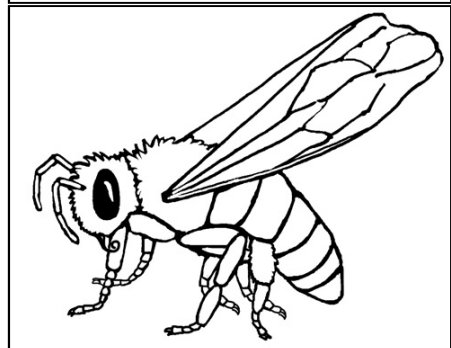
State Bird: Eastern Goldfinch

Color the wings yellow. The forehead and wings are black.



State Insect: Honey Bee

Color honey bee's yellow with the exception of the wings, they should be left white.



In colonial America, lighthouses were built initially at busy harbors. The beam of the light was visible for 22 miles and its gleaming reflection in the night sky, could be seen from 70 miles at sea.

Draw a picture of a lighthouse mentioned below or one of your favorites.

Cape May Lighthouse (1823, 1847, 1859)

This lighthouse is a 170 foot tower made from masonry and located at Cape May Point in New Jersey. It contains a red lantern which guides ships into the Delaware Bay. The tower had been painted white for many years. It was recently restored to its original beige color.

Absecon Lighthouse

Built in 1872, this lighthouse is located in Atlantic City, NJ. The lighthouse is a brick tower on a granite base which stands 171 feet tall. The tower is white with a red band in the mid section.

Barnegat Lighthouse

("Old Barney")

The original Lighthouse was built by Winslow Lewis in 1835. At that time it was only 40 feet tall. Today the tower is 172 feet tall, and 217 steps to the top. It is located on the southside of Barnegat Inlet on Long Beach Island, New Jersey. It is maintained as part of the New Jersey State Park System.





Recipes

Double Blueberry Cookie Pie

- 1 package of refrigerated sugar cookie dough, room temperature
- 1/3 cup all-purpose flour
- 3 cups fresh or frozen blueberries
- 3/4 cup sugar
- 3 tablespoons cornstarch
- 1 dash salt
- 1 teaspoon lemon juice
- 1 cup heavy (whipping) cream, whipped



Preheat oven to 350 degrees. Spray a 9-inch pie pan and small cookie sheet with nonstick cooking spray. In a small bowl combine sugar cookie dough and flour until mixed. Remove about a quarter of the cookie dough; cover with plastic and refrigerate for later use.

With floured hands, press dough into bottom and sides of prepared pan. Place in freezer to firm up, about 15 minutes. On a lightly floured surface with a floured rolling pin, roll out refrigerated cookie dough 1/4 inch thick. With a floured cookie cutter, cut out stars or other shapes; place on prepared cookie sheet.

Bake cookie dough pie crust until golden, about 11 minutes and stars for about 6 minutes. Cool on wire racks. Meanwhile, in a medium saucepan, combine 1 cup of the blueberries, the sugar, cornstarch and salt. Stir in 2/3 cup water and the lemon juice. Over medium-high heat

bring to a boil. Boil, stirring constantly, until mixture thickens, crushing blueberries.

Stir in remaining 2 cups blueberries; chill. Spoon blueberry mixture into cooled cookie shell. Decorate with the star-shaped cookies and whipped cream. Makes 8 portions.

Blueberry-Peach Pound Cake

- 1/2 cup butter or margarine, softened
- 1 1/4 cups sugar
- 3 eggs
- 1/4 cup milk
- 2 1/2 cups cake flour
- 2 teaspoons baking powder
- 1/4 teaspoon salt
- 2 1/4 cups chopped peeled fresh peaches (1/2-inch pieces)
- 2 cups fresh or frozen blueberries
- Confectioners' sugar, optional

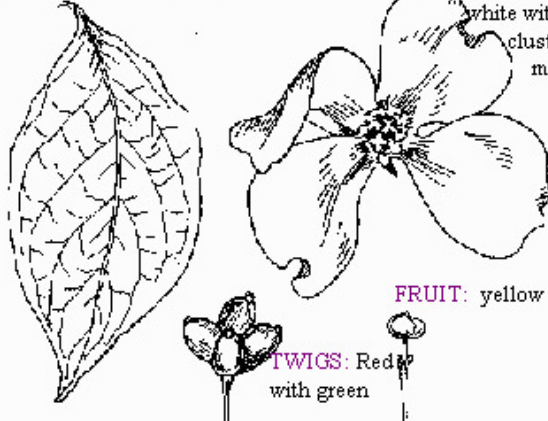


In a mixing bowl, cream butter and sugar. Beat in eggs, one at a time. Beat in milk. Combine the flour, baking powder and salt; add to creamed mixture. Stir in peaches and blueberries. Pour into a greased and floured 10-inch fluted tube pan. Bake at 350 degrees for 60 to 70 minutes or until a toothpick inserted near the center comes out clean. Cool in pan for 15 minutes; remove to a wire rack to cool completely. Dust with confectioners' sugar if desired. Makes 10-12 servings.

NATIVE TREES OF NEW JERSEY

LEAVES: 3-5 inches long, green in the spring, red in the fall.

FLOWERS: greenish white with yellow small clusters in the middle.



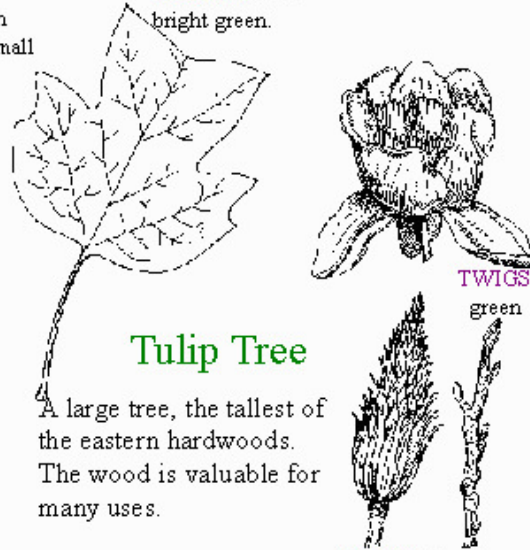
FRUIT: yellow

TWIGS: Red with green

Flowering Dogwood

Wood used primarily for textile weaving. A small native tree used for decorative planting.

LEAVES: 4"-6" bright green.



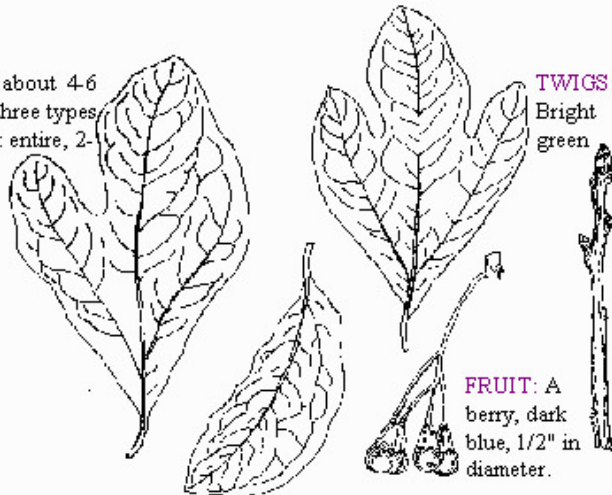
TWIGS: green

Tulip Tree

A large tree, the tallest of the eastern hardwoods. The wood is valuable for many uses.

FRUIT: Green
2½"-3" long

LEAVES: Dark green about 4-6 inches long. Usually three types can be found on a tree: entire, 2-lobed and 3-lobed.



TWIGS: Bright green

FRUIT: A berry, dark blue, 1/2" in diameter.

Sassafras

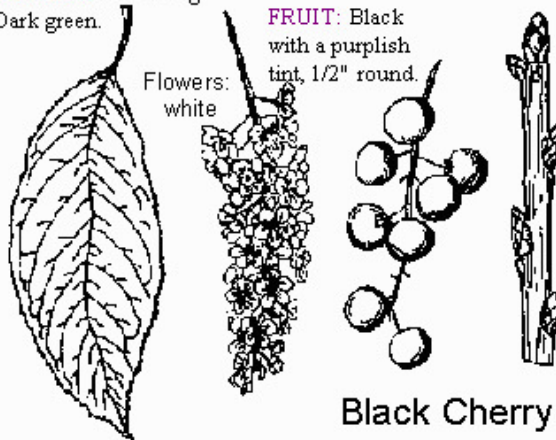
Its roots, leaves, twigs and fruit have a spicy odor; the oil contained in these parts is used for a "tea," in medicines, perfumes, etc. Wood used mainly used for fuel and fence posts. It reaches about 50 feet high.

LEAVES: 2"-5" long Dark green.

FRUIT: Black with a purplish tint, 1/2" round.

Flowers: white

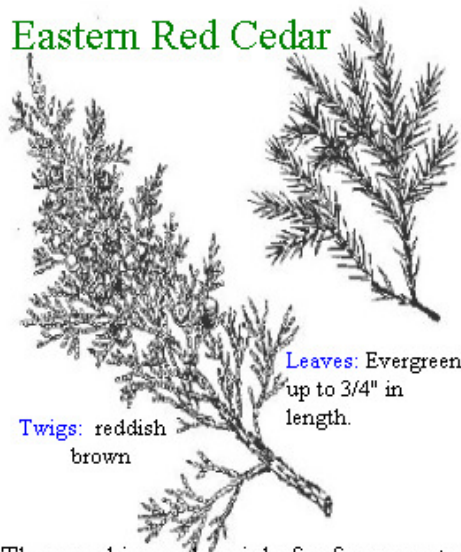
TWIGS: reddish brown with green buds.



Black Cherry

The wood is used for quality furniture and interior trim. Many game birds, song birds, and mammals eat the fruits and seeds. It grows to be about 50-75 feet in height.

Eastern Red Cedar



Leaves: Evergreen up to 3/4" in length.

Twigs: reddish brown

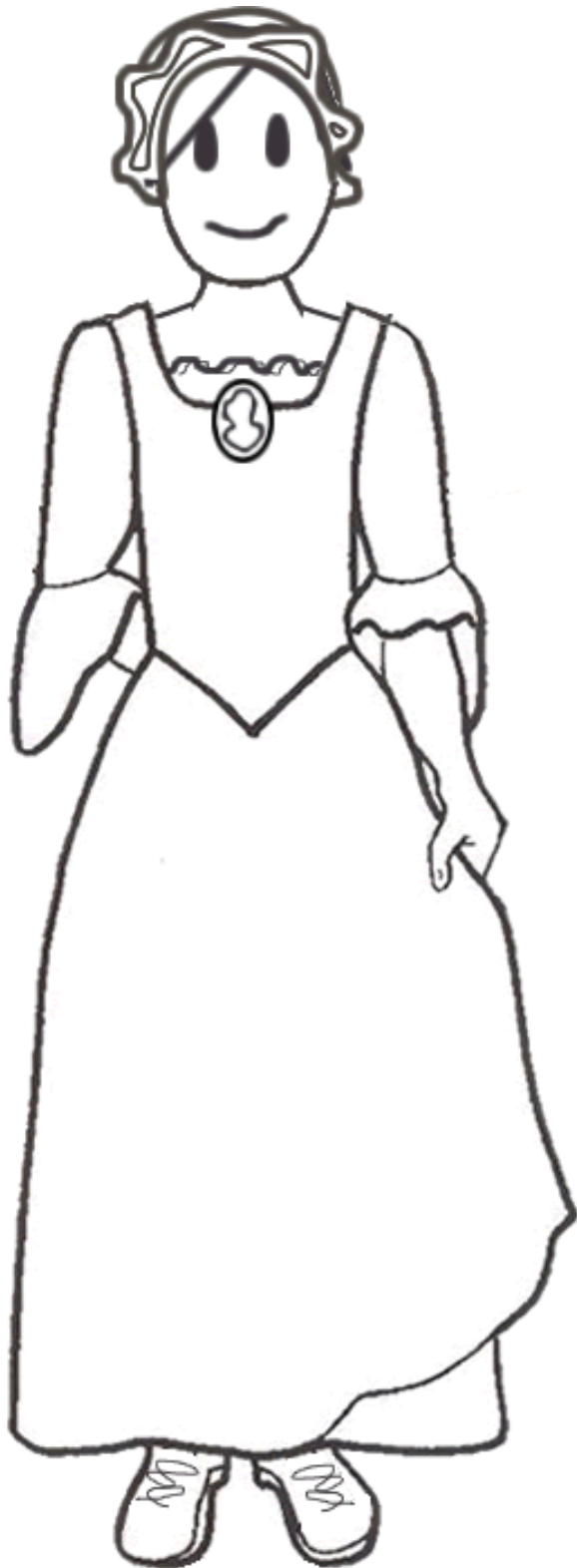
The wood is used mainly for fence posts and moth-proof chests. Reaches 40' high.

Pictured below are *Leni-Lenape*, “*genuine people*”, *Native Americans*.

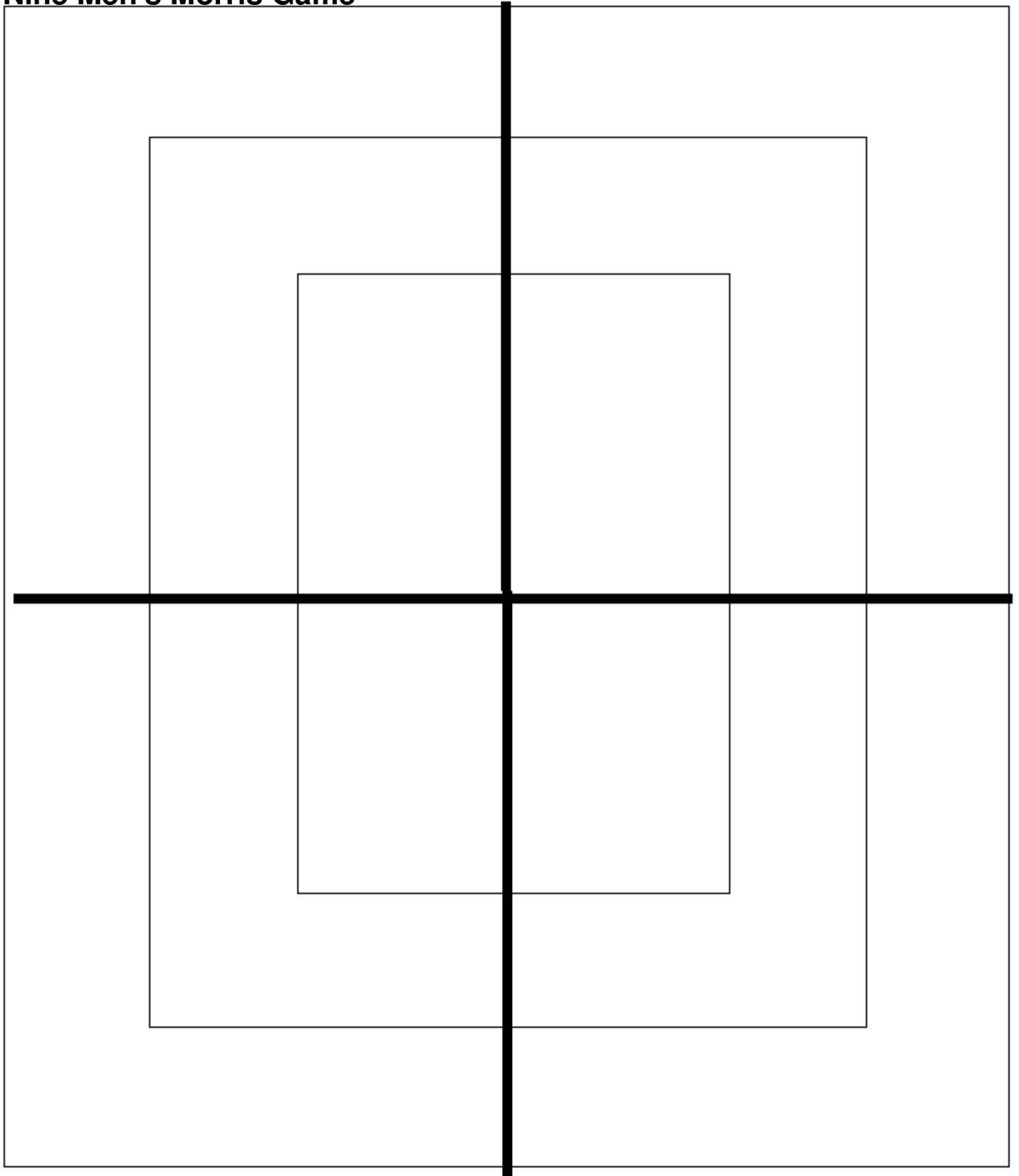
They are both wearing moccasins made from deer skin and feathers in their hair for decorations. Nearly everything they wore was made of leather, buffalo skin, softened and tanned. She is wearing a leather dress trimmed with fringes. To complete her outfit she is wearing bracelets and a necklace. He is wearing a leather shirt and leather pants with fringes. To keep warm in the winter he wears a fur type coat that drapes over his shoulders to keep him warm.



Pictured below are **colonists from the 1700's**. Colonists are early settlers of the first 13 colonies in America. The woman is wearing a mop hat, a cotton dress trimmed with ruffles on the sleeve, it has a small lace inset complimented with a broach at the neckline. To complete her outfit she is wearing a laced up boot. A man's daily clothing consisted of a vest, shirt, and breeches. The vest and breeches were often made of matching material. The hat he wears is folded up and sometimes resembles a triangle. Men's shoes were and low-heeled leather black shoes with a buckle.



Nine Men's Morris Game



Give each participant NINE game pieces. Such as beans, buttons, or beads. Take turns placing the pieces on the board where the lines meet. When a player gets three pieces in a vertical line or horizontal lines, they remove one of the opponents pieces. When all the pieces are played , continuing playing by sliding pieces from side to side along the lines. A player wins when her opponent has only two pieces left.

Vocabulary words:

derivatives - copied from somewhere and not original

patent- an exclusive right officially granted by a government to an inventor to make or sell an invention

articulating- spoken or expressed clearly

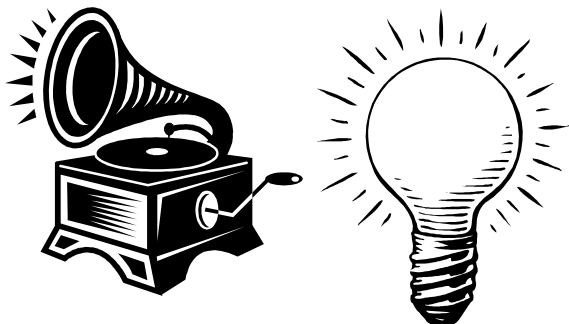
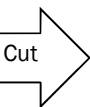
incandescent- glowing with heat; shining or glowing

Thomas Edison

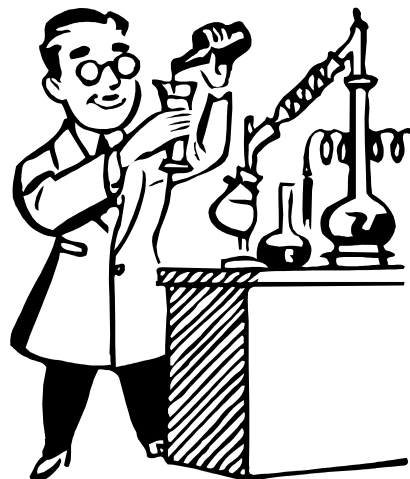
1847-1931



“ A genius in the history of technology”

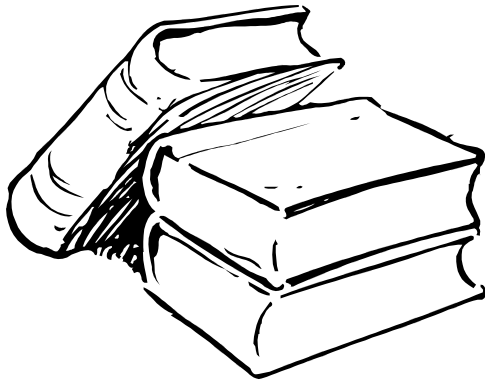


In 1876 Edison sold his Newark factory and moved to [Menlo Park](#), New Jersey, where he set up a laboratory where he could devote his full attention to inventions. At age 29, he started working on the carbon transmitter, which would ultimately make Alexander Graham Bell's amazing new "articulating" telephone clear enough to hear for practical use. In 1877, Edison invented the first phonograph, a record player. In 1879, Edison invented the first commercially practical incandescent electric light bulb. In 1887 Edison moved his workshop from Menlo Park to West Orange, New Jersey, where he built the Edison Laboratory, now a national monument.



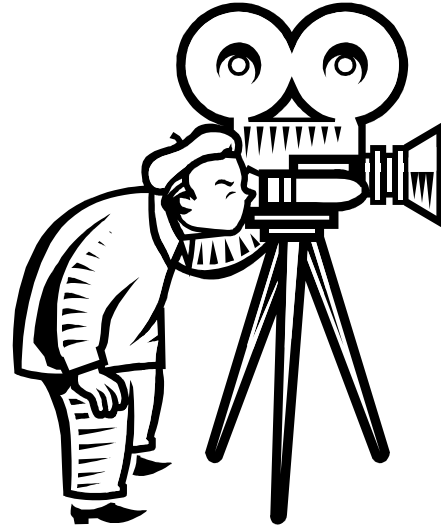
Tom grew and his thirst for knowledge grew with him. He enjoyed learning and asking questions about his many discoveries. At age ten he had already set up a small chemical laboratory in the cellar of his home.

One day he stumbled upon the Issac Newton "Principia". This helped him discover Newton's physical laws and inspired him to think more freely.



Thomas Edison was born on February 11, in Milan, Ohio to Samuel and Nancy Edison. Thomas went to school until age 7. His teacher insisted that he was mentally unstable. His mother quickly withdrew him from school and began to “home teach” him.

1



At around the turn-of-the-century, Edison invented and perfected the first Dictaphone, mimeograph, and practical storage battery. Then, after creating the "kinetoscope" and the first silent film in 1904, he went on to introduce the first "talking" picture in 1911.

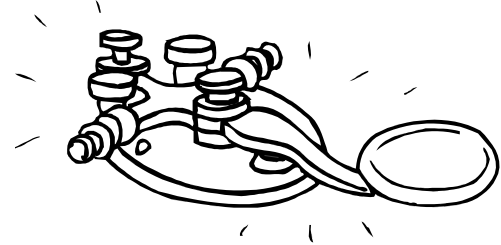
After obtaining his last (1,093rd) patent at age 83, he worked mostly at home in his laboratory.

6



By age 12, Tom was selling newspapers, he wrote, at local train stations, making nearly ten dollars a day. He used all his money to conduct further experiments in his chemical laboratory. At age 14, he contracted Scarlet Fever and lost almost all of his hearing. He felt he could work better without the surrounding noises, but soon started to miss the sounds of God's creations. Later he would create an aviary of over 5,000 creatures.

3



At age 16, after working and experimenting in a variety of telegraph offices, he came up with his first authentic invention. The invention was a beautifully designed and highly efficient electric vote-recording machine. This was the only beginning of many more wonderful inventions to come. 1869, age 22, he was asked to repair the crude stock ticker for Western Union Telegraph Company, he did so expertly that he was given a job as its supervisor. Soon he had remodeled the machine so well and as a result patented the Edison Universal Stock Printer, which, together with several other derivatives of the Morse telegraph, brought him a sudden fortune of \$40,000. He soon started manufacturing stock tickers and high-speed printing telegraphs in Newark, New Jersey.

4

Cut here

Hit a Homerun! Game

On June 19, 1846, just across the river from Manhattan, at Elysian Fields in Hoboken, New Jersey, the first baseball game ever played between two organized teams took place. It was a little bit different than baseball today for instance, they caught the ball barehanded, fortunately the ball was a lot lighter.

Alexander Cartwright's Knickerbocker club took on a team called the New York Nine... the game, which was played under Cartwright's rules, lasted four innings and Cartwright's team lost by the score of 23 to 1... with Cartwright umpiring the game!

Playing the Game: [This game is for 2-4 players]

Provide each group of 2-4 people with a game board, cards, game pieces, and scoreboard.

Game Pieces: You can use coins, buttons, etc. As long as the pieces are different colors or shapes.

Cut out the question cards and place them near the board.

Everyone starts at the homerun plate. The youngest player goes first.

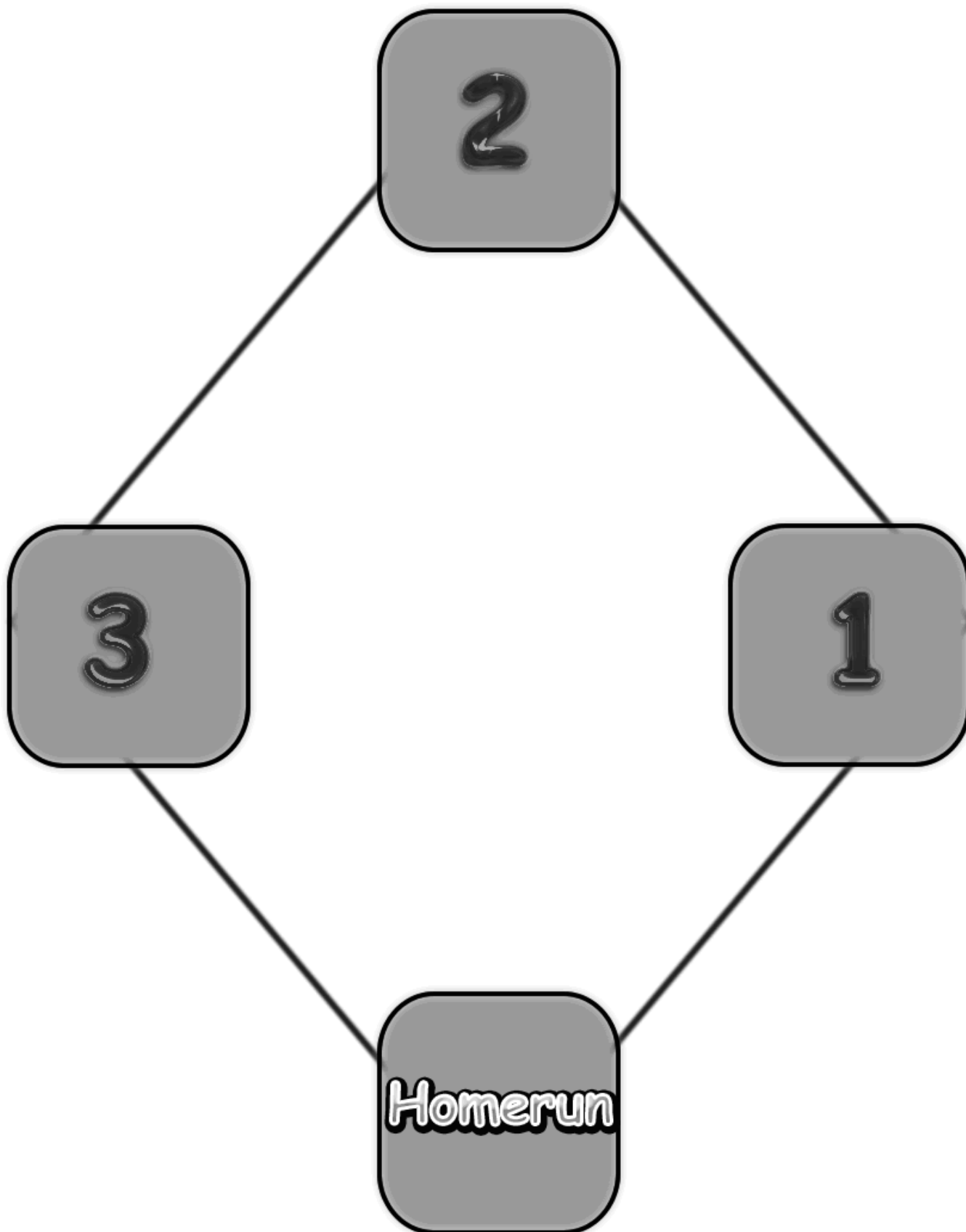
Question Cards: You will need to cut out the question cards for each game. For extra, you may wish to glue them on index cards or just make sure the players can not read through them when the questions are being answered. The player that is person "up to bat" when be given a question to answer about New Jersey. The person to the right of them will "pitch" the questions for them to answer. After the question is read, place it on the bottom of the pile. Some questions may be asked more than once depending on the score of the players.

Moving and Scoring: As they answer the questions correctly they move their game pieces from the homerun space, around the board. They get a point for each time they pass over the plate, that turn. If they miss the question, they stay on the spot they are on and their turn is complete. They will start the next inning, or turn, on that spot.

After their turn they write down the number of points they earned. If they did not make it around the board during their turn then they get **zero** points for that inning. **Each turn is a new inning.** After five innings the game is over and the person with the highest score wins. There may be a tie in this game. As an option you can go into "overtime" and the first person to make a point wins.

Please note the participants should complete the New Jersey Kit prior to playing the game so they can answer some of the questions. Some answers will not be in the kit.

GAME BOARD



<p>What is the capital of New Jersey?</p> <p>Trenton</p>	<p>Name two (2) foods that the Native Americans ate?</p> <p>Corn, beans, fish, pumpkin, berries, squash, etc.</p>	<p><i>True or False</i></p> <p>Colonial children helped churn butter and pick apples for chores.</p> <p>TRUE</p>
<p><i>True or False</i></p> <p>Baseball was first played in New Jersey.</p> <p>TRUE</p>	<p>What is the nickname of New Jersey?</p> <p>“The Garden State”, “Clam State”, or “ The Pathway of the Revolution”</p>	<p>What person was New Jersey named after?</p> <p>Sir George Carteret</p>
<p><i>True or False</i></p> <p>New Jersey was one of the first Thirteen colonies to enter the union.</p> <p>TRUE</p>	<p>Name a state that surrounds New Jersey.</p> <p>New York, Delaware, and Pennsylvania.</p>	<p><i>True or False</i></p> <p>A dugout canoe is a boat made of twigs and mud.</p> <p>FALSE, a dugout canoe is made of a tree trunk hollowed out.</p>
<p>Name the state bird of New Jersey.</p> <p>Eastern Goldfinch</p>	<p>Name the state flower of New Jersey.</p> <p>Violet</p>	<p><i>True or False</i></p> <p>Thomas Edison invented the light bulb.</p> <p>TRUE</p>
<p>Name the state insect of New Jersey.</p> <p>Honey Bee</p>	<p>What does the word liberty mean on the state New Jersey flag?</p> <p>Freedom</p>	<p><i>True or False</i></p> <p>Thomas Edison conducted experiments as a child using his paper route money.</p> <p>TRUE</p>
<p><i>True or False</i></p> <p>Thomas Edison invented the computer.</p> <p>FALSE</p>	<p><i>True or False</i></p> <p>The Dogwood tree has a flower that blooms on it.</p> <p>TRUE</p>	<p>Is part of New Jersey near the Ocean?</p> <p>YES</p>

<p>Name a lighthouse in New Jersey.</p> <p>Cape May, Barnegat, Absecon etc.</p>	<p>Name two (2) foods that they ate during colonial days?</p> <p>Corn, beans, fish, pumpkin, berries, squash, stew, etc.</p>	<p><i>True or False</i></p> <p>Leni-Lenape means “genuine people”.</p> <p>TRUE</p>
<p><i>True or False</i></p> <p>Johnson and Johnson invented the band-aid.</p> <p>TRUE</p>	<p>What are the symbols called that native Americans used to write stories?</p> <p>pictographs</p>	<p>What did T. B. WELCH invent that is still used today?</p> <p>Welch’s Grape Juice</p>
<p><i>True or False</i></p> <p>Margaret Cochran brought water to the soldiers during the battle of Monmouth.</p> <p>FALSE, Molly Pitcher did.</p>	<p>Name the sweet candy that was first made in New Jersey in 1870 near the sea coast.</p> <p>Salt Water Taffy</p>	<p><i>True or False</i></p> <p>A dugout canoe is a boat made of twigs and mud.</p> <p>FALSE, a dugout canoe is made of a tree trunk hollowed out.</p>
<p>Name the state bird of New Jersey.</p> <p>Eastern Goldfinch</p>	<p>Name a type of housing used by native Americans.</p> <p>Teepees or wickups</p>	<p><i>True or False</i></p> <p>Native Americans were skilled hunters and crafts people.</p> <p>TRUE</p>
<p><i>True or False</i></p> <p>Native Americans wore moccasins.</p> <p>TRUE</p>	<p><i>True or False</i></p> <p>The Statue of Liberty is near New Jersey.</p> <p>TRUE</p>	<p><i>True or False</i></p> <p>Colonial women only wore dresses.</p> <p>TRUE</p>
<p>Name a park or river located in New Jersey.</p> <p>Answers will vary.</p>	<p><i>True or False</i></p> <p>The colonial people rode on horses for transportation.</p> <p>TRUE</p>	<p>What did Native Americans make their clothing from?</p> <p>Leather, animal skins, fur etc.</p>

SCORE BOARDS

NAME	1	2	3	4	5	Total

NAME	1	2	3	4	5	Total

NAME	1	2	3	4	5	Total

NAME	1	2	3	4	5	Total

Patchwork Designs, Inc.

ORDER FORM

Please complete this form and mail or fax it to:

Patchwork Designs, Inc.

8421 Churchside Drive
Gainesville, VA 20155

(703) 743-9948 PHONE

(703) 743-9942 FAX

You can add any additional items to this form that you may need for your event or group.

Name _____

Address _____

City _____ State _____ Zip _____

Phone () _____ Referred By: _____

Email Address: _____

Discover/MasterCard/Visa# _____ - _____ - _____ or Check # _____

Expiration Date: _____ Have you ordered before? _____

Item #	Description	Quantity	Unit Price	Total Price
New Jersey	New Jersey Patch		\$1.75	\$
				\$
				\$
				\$
				\$
			\$	\$
			\$	\$
			\$	\$
			\$	\$
			\$	\$
			\$	\$
SUBTOTAL				\$
Regular Shipping & Handling (view chart)				\$
Special Shipping (next day, priority mail etc)				\$
TOTAL ENCLOSED				\$

PATCHWRK DESIGNS, INC



**Patch and Program Created
By:
Cheryle Oandasan**

8421 Churchside Drive
Gainesville, VA 20155
Phone: 703-743-9948
Fax: 703-743-9942
E-mail: orders@patchworkdesigns.net

WWW.PATCHWORKDESIGNS.NET

If you would prefer Priority Mail, please add \$2.00 to the \$4.99 or above shipping category.

Next day service is an average cost of \$28.00 (USPS determines the pricing according to the zone and weight.)

Patches	
1-5	\$3.55
6-20	\$4.99
21-30	\$5.99
31-50	\$6.50
51-70	\$6.99
71-100	\$9.55
101-150	\$10.55
151-200	\$13.00
201-400	\$15.99
401-500	\$17.50
Over 500	Contact us for pricing

Kits or Manuals (shipped Priority Mail)	
1	\$6.99
2	\$9.25
3-5	\$10.75
6-8	\$12.75
10-12	\$15.75
13-20	\$22.25
21-23	\$24.00
Over 24	Contact us for pricing

Kits and manuals range from 30 to 62 pages in length (except the Patch Program Book, that is over 100). Therefore if you are ordering more than 2 kits or manuals, please use the above shipping chart. Patches, bracelet kits, and stamps can be added to any order falling within that price range. Otherwise, use the highest shipping amount on the chart according to the items ordered.