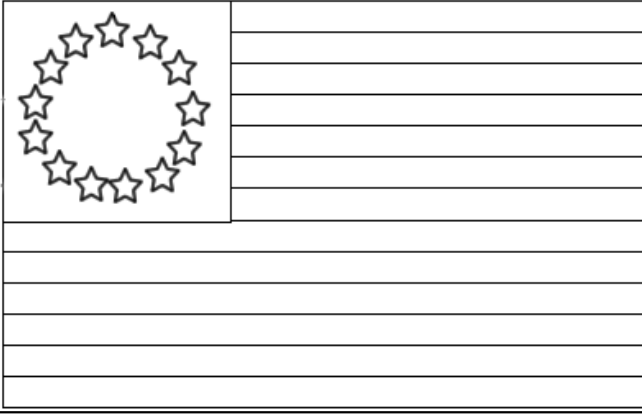


# **United States of America**

United States is located on the North America continent. The capital is in Washington DC. Color a map of all the states you have visited. Map out a pretend trip of all the states you would like to visit by coloring it different colors.



# Flags of the United States

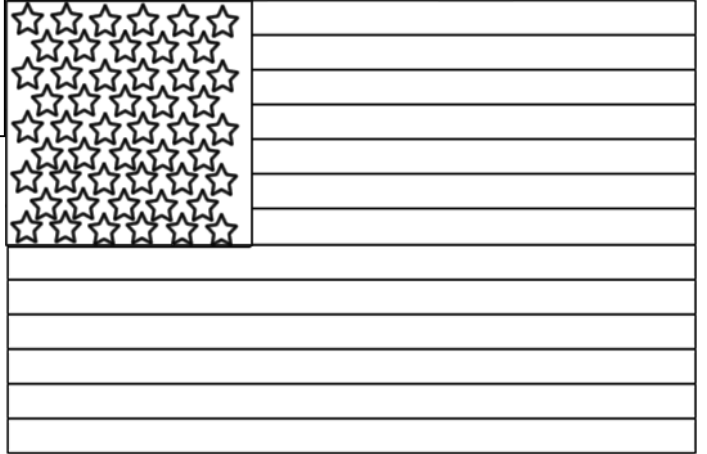


Pictured to the left is the first flag of the United States. It is believed that Betsy Ross, a Philadelphia seamstress, made the first flag. It has 13 stars and 13 stripes to represent the 13 colonies. In order of established: Virginia (1607); Massachusetts (1620); New Hampshire (1623); Maryland (1634); Connecticut (1635); Rhode Island (1636); Delaware (1638); North Carolina (1663); South Carolina (1663); New York (1664); New Jersey (1664); Pennsylvania (1681); and Georgia (1733).

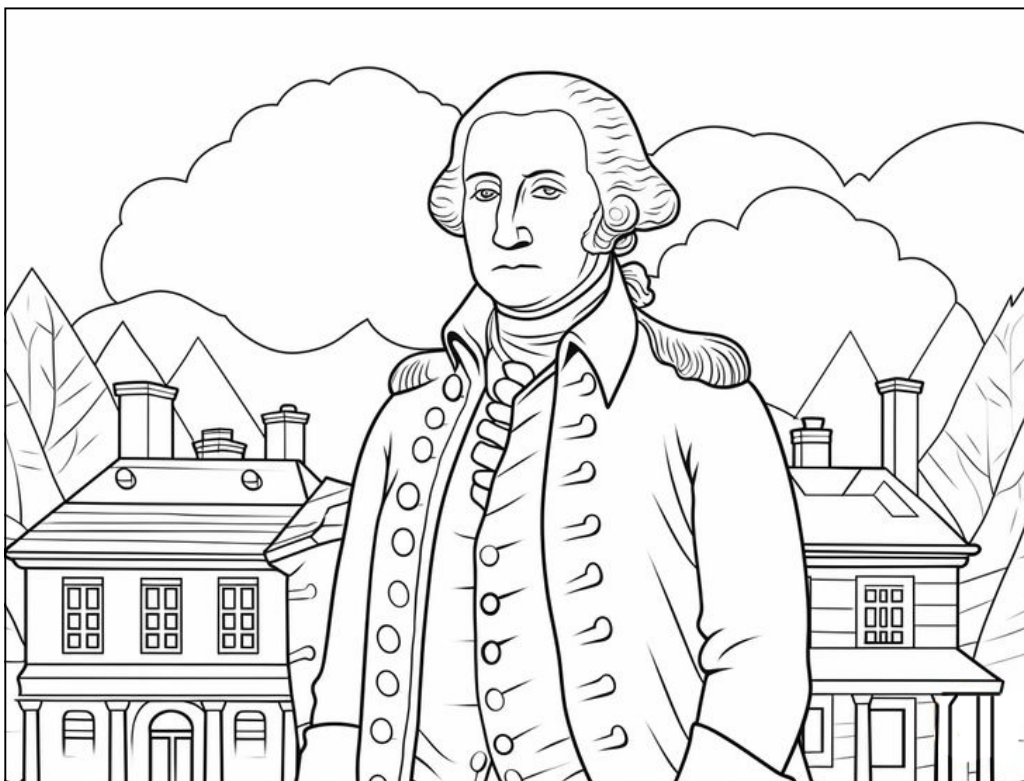
**Color the stripes red and white starting with red. Color the stars white and the square beneath it blue.**

Pictured to the right is the flag we hang all across America today. The 13 stripes represent the first colonies of America. The 50 stars represent every state that is part of union of the United States.

**Color the stripes red and white starting with red. Color the stars white and the square beneath it blue.**



# George Washington



The First President of the United States was George Washington.

He was born in Virginia. He was a farmer and a surveyor.

He was a General during the American Revolutionary War (1775–1783)

He served as president from 1789-1797. His vice president was John Adams.

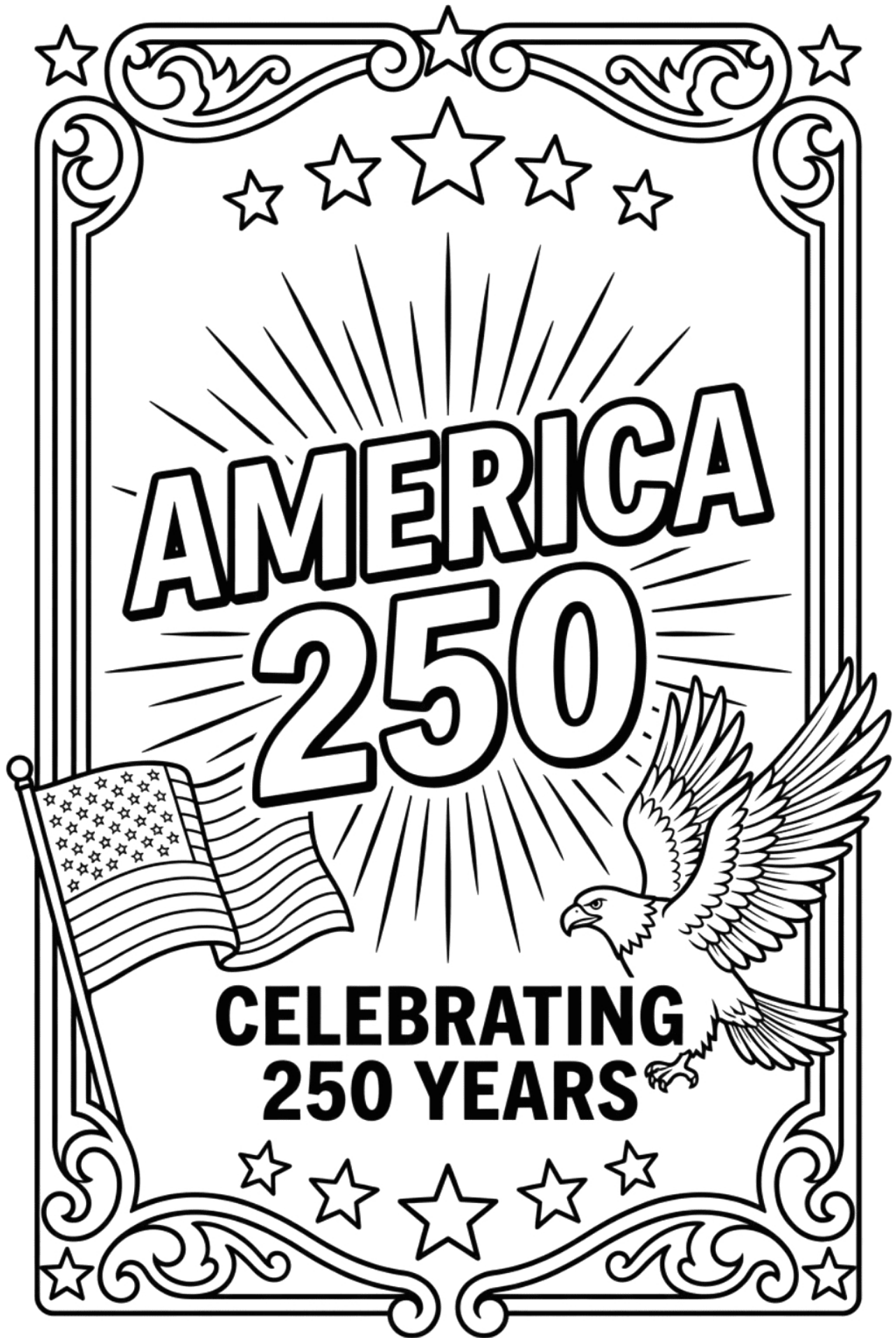
He was only president that never lived in the White House.

He retired to live in Virginia at his Mount Vernon home. You can visit his home.

# Statue of Liberty

The Statue of Liberty was a gift from France to the people of the United States and was dedicated in 1886. It is known as one of the patriotic symbols representing the freedom and democracy found in the United States of America. She is 152 feet tall. Draw yourself standing next to her.





**AMERICA  
250**

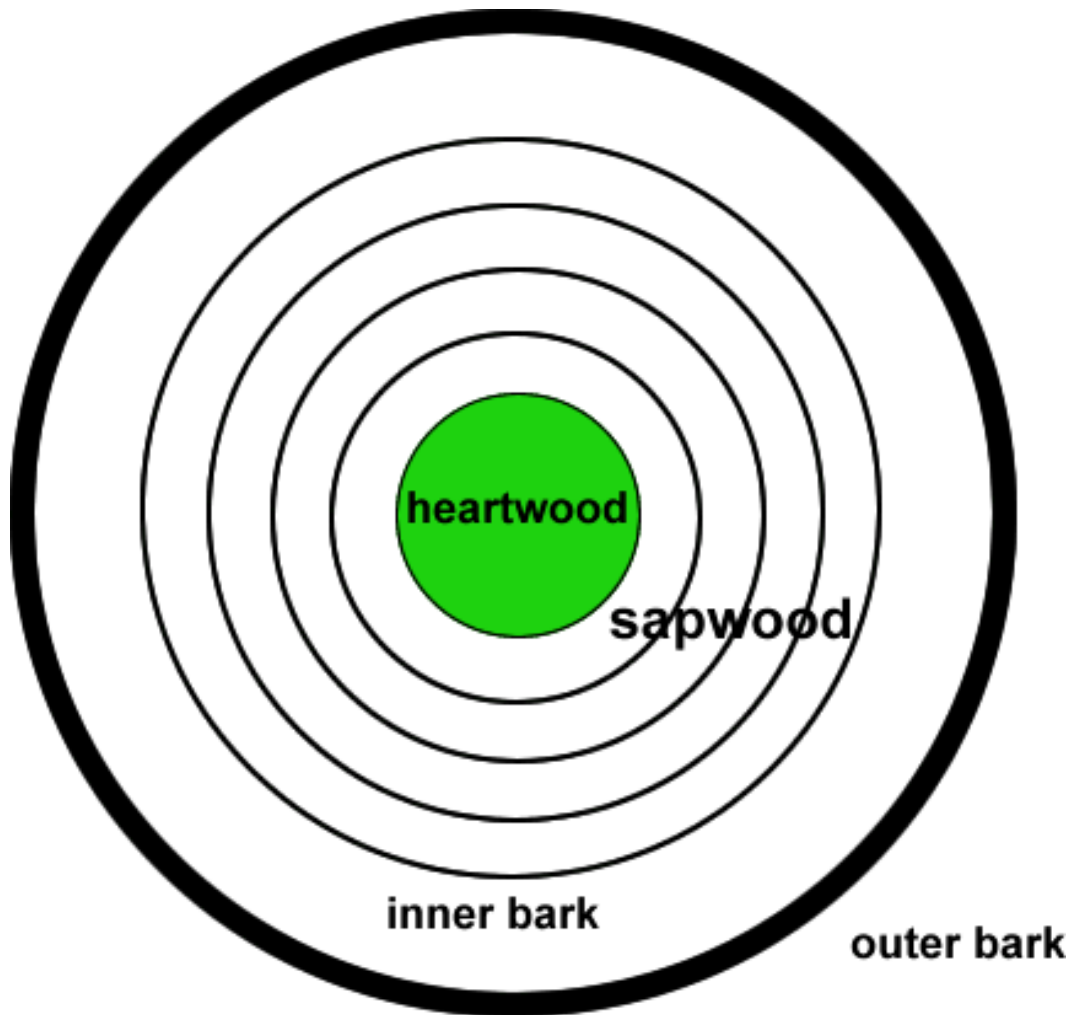
**CELEBRATING  
250 YEARS**

# Tree Rings

The **giant sequoia tree**, found in California, has a reddish-brown bark. They are one of the oldest living trees on earth and one of the fastest-growing trees, eventually reaching 270 feet or more in height.

The taller and more slender **California coast redwood**, has a reddish-brown bark. On average, redwoods grow to heights of 275 to more than 300 feet.

How old do you think this tree is? \_\_\_\_\_



**outer bark** - the protective outer layer of the trunk. (Color it **BROWN** or **reddish Brown**)

**inner bark** - the layer of the trunk through which the tree's food flows - it is located between the outer bark and the sapwood. (Color it **RED**)

**sapwood** - the layers of wood just outside the heartwood. Each year a new layer of wood is formed, creating the time line of the tree. (Color the rings in different colors, representing the rings of its life)

**heartwood** - the core of the trunk (Color it a color you have not used yet)